



TAH DESIGN

PTAH DESIGN

*What is your story?*



PORTFOLIO

[www.ptah-design.com](http://www.ptah-design.com)

# PORTFOLIO



*“Every person possesses  
uniqueness, their own story,  
and sensitivity; thus, their  
dwelling should mirror their  
personality.”*

*Sarah*

PTAH

## INDEX

- My story •
  - Our team •
  - Who is PtaH? •
  - PtaH experience •
  - Our vision •
  - Our services •
  - Portfolio •
-



# MY STORY

*"Entre la pierre et le fer  
Entre le palmier et le laurier  
C'est entre ces deux pays que je me suis inspirée."*

Having lived between two different cultures, France and Egypt, interior designer Sarah Aly drew inspiration from the mystery and details in her projects, working under the name 'Ptah'.

## FOUNDER

**SARAH Aly**

Interior architect graduate in 2011 from CREAPOLE Art School in Paris .



**MOH SHARABY**

GENERAL  
MANAGER  
(Egypt)



**SALMA RAMA**

GENERAL  
MANAGER  
(France)

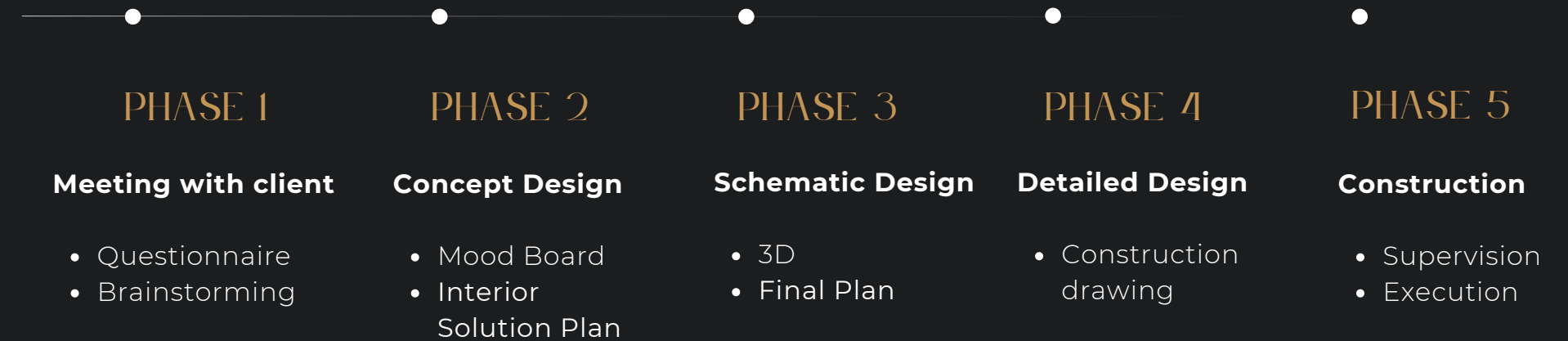
# WHO IS PTAH?

*"Ptah is the hidden story behind every detail."*

Ptah Design is an interior design studio that embraces the differences in people, cultures, and daily routines. Ptah Design's approach to architecture and interior design combines adaptability with the ability to reflect each client's unique personality, resulting in one-of-a-kind designs.



# PTAH EXPERIENCE



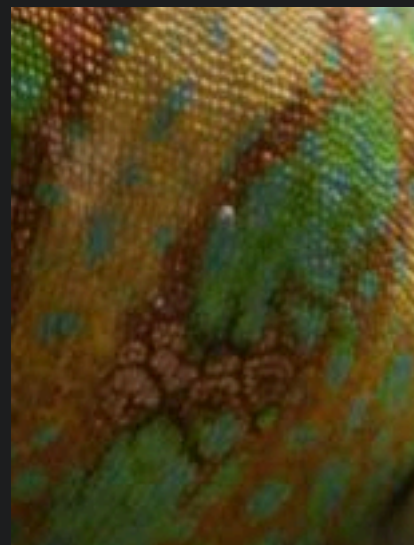
# OUR VISION



*"Like a chameleon's skin,  
Ptah Design adapts to its  
clients."*



*"With its powers, the God  
Ptah has reincarnated into  
our chameleon to adapt to  
modern life."*



*"With a 360° vision,  
Ptah Design harmonizes  
space."*

# OUR SERVICES



*Interior Design*



*Furniture design*



*Interior Solution*

# INTERIOR SOLUTION



P O R T F O L I O



# EMPIRE EGYPTIEN

CAIRO, EGYPT

NEW CREATION

An office with a double door for access from both the exterior and the interior.

A jacuzzi centered in front of the bed, accessible through two sliding double doors



Savor your dinner by the pool

Concept of two connecting rooms through the dressing area, promoting sharing and seamlessly aligning with the homeowners' lifestyle.



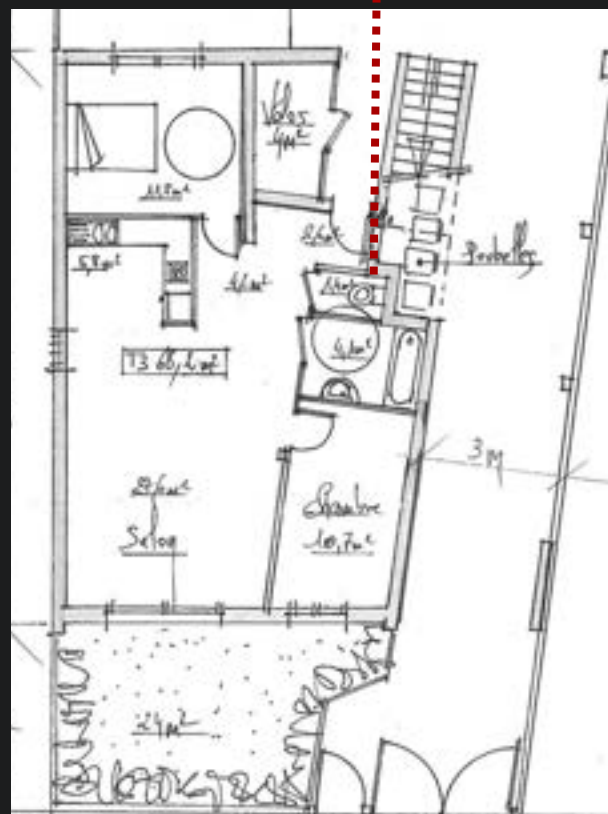


# VILLA ANAY

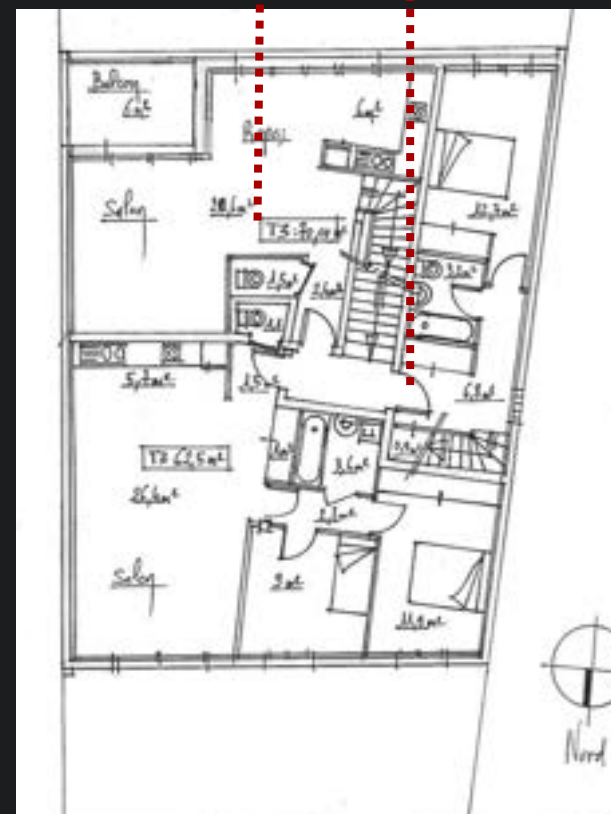
PARIS, FRANCE

BEFORE AFTER

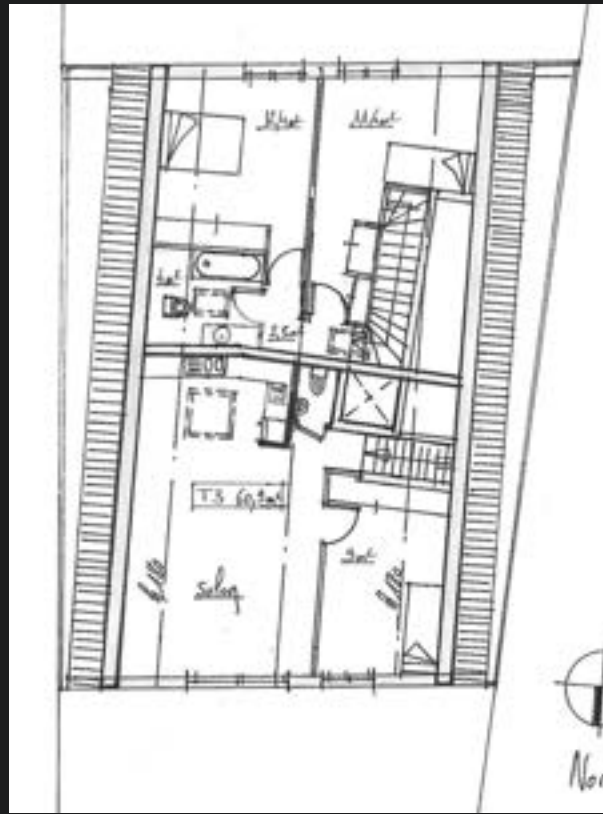
windowless bathroom



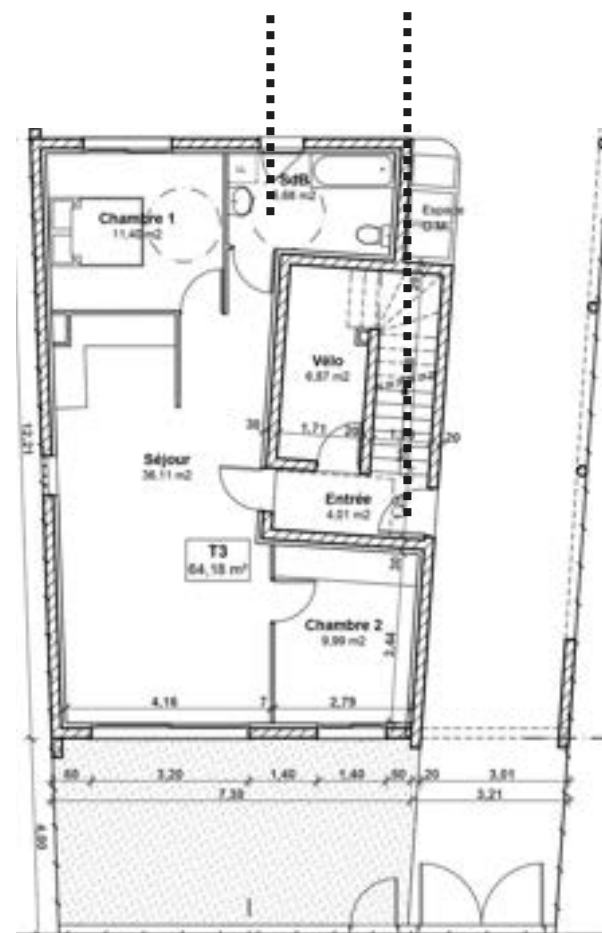
WC right from the entrance



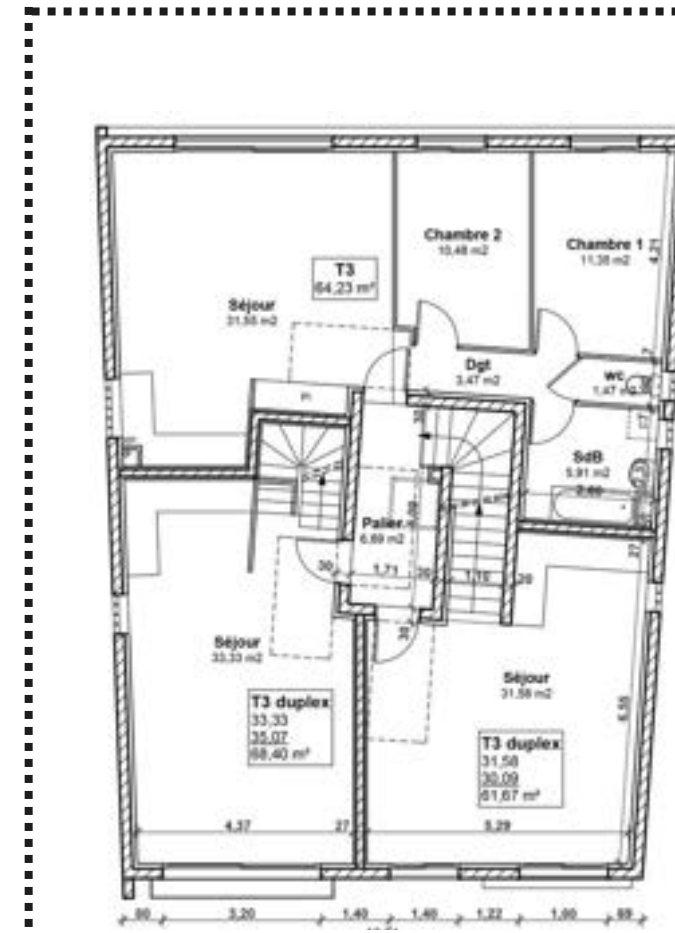
unwelcoming entrance



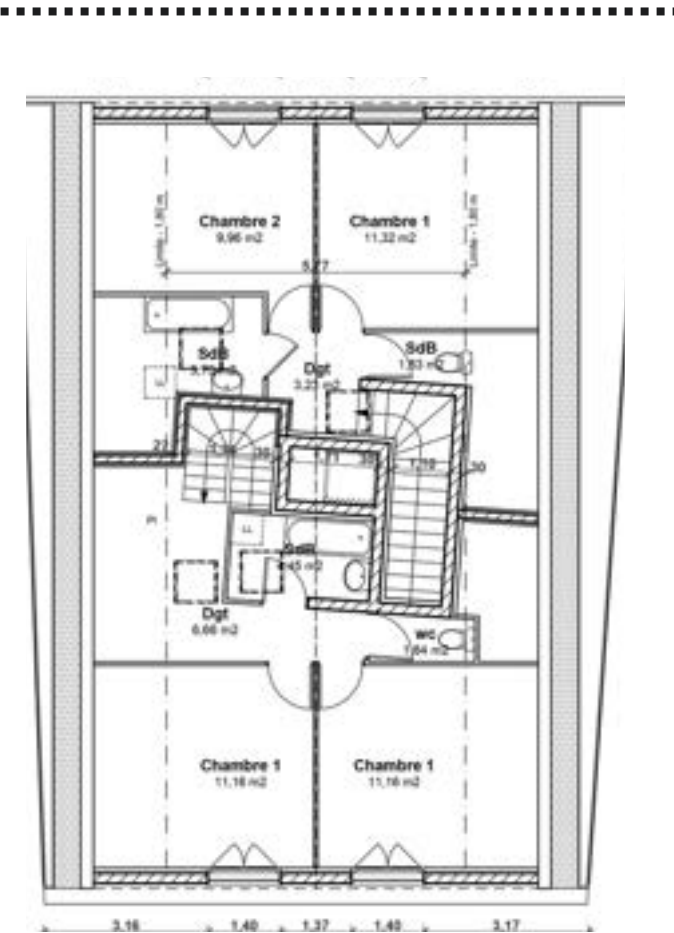
Bathroom with a window



Facilitate access to the building's entrance by bringing it closer to the main street



Rearrangement of two duplexes with a welcoming entrance and direct access to the living area. For more privacy, we kept the bedrooms on the upper floor.

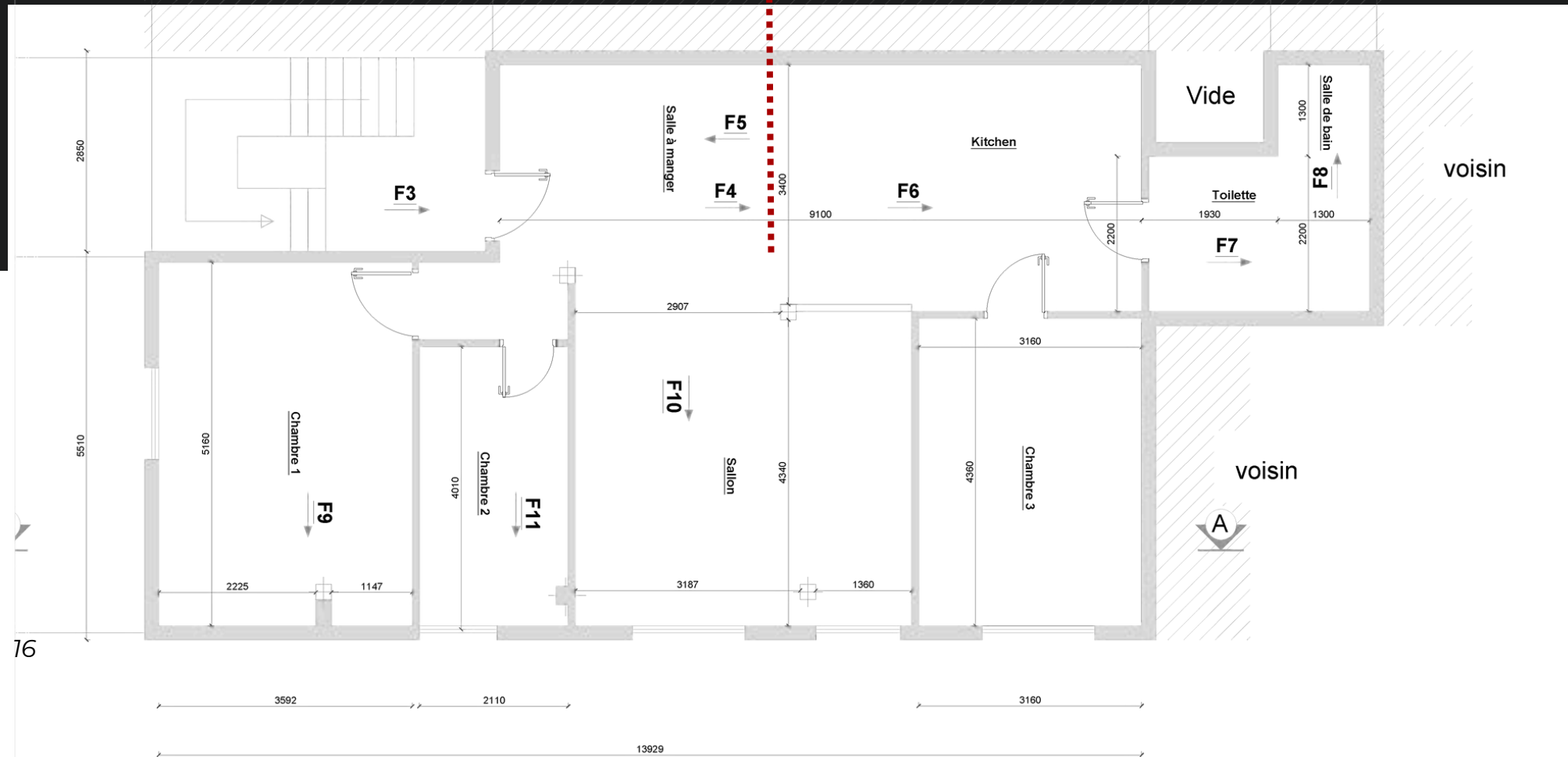


# TUNIS

TUNIS, TUNIS

BEFORE AFTER

Insufficient natural light in the apartment.  
Inefficient room layout



By pivoting the front door, it was the key to solving the puzzle of this apartment

Creation of a kitchen positioned at the heart of the house, elegantly enclosed with workshop-style windows allowing light to penetrate from all sides



A glass ceiling was created to allow natural light into the bathroom and the master bedroom.

# RESIDENTIAL



P O R T F O L I O

# INTERIOR DESIGN



P O R T F O L I O





# EMPIRE EGYPTIEN

*"The Artful Fusion of Past and Present."*

At Ptah, we believe in the art of blending the past and the present to create exceptional interior spaces. One of our most captivating centerpieces is this fireplace, which far exceeds its primary function of heating; it is in itself a work of art. Its exterior exudes classic elegance with ornaments, and its glass base not only allows you to fully enjoy the gentle glow of the flames but also adds a modern touch. The combination creates a remarkable visual effect, where tradition meets modernity harmoniously.

*Cairo, Egypt*

---







For this office within a house, our goal was to create a distinctive space, both elegant and functional, while maintaining its harmonious integration with the rest of the house. We chose the color "petrol blue" for the walls and wooden furniture to visually set this space apart from the other rooms.

*"To see without being seen."*

For added creativity, we have chosen a painting of the White Lady with her eyes concealed, allowing visitors to continue the image with their imagination.





## CENTRAL HOUSE POOL

*"To relax in the middle of winter"*

The creation of an indoor pool within a house provides an oasis of relaxation, even in winter. Access to this pool is facilitated by two marble steps that elegantly frame the basin. These steps not only add a touch of sophistication but also allow for a seamless transition into this dedicated space for relaxation.







# THE TIME

*"Time of elegance."*

Upon entering, the impact of the double-height space is immediately felt, emphasized by the imposing presence of the tree symbolizing the connection between the interior and the exterior.



*"The Connection Between Nature and Architecture."*

This tree brings nature into the heart of the home, creating a unique and memorable impression. The surrounding walls, dressed in black stone, add an element of elegance and mystery to the space, creating a striking contrast with the greenery of the tree. The overall ambiance conveys a sense of grandeur and harmony between nature and architecture.

*Cairo, Egypt*





# TUNIS

*"To partition in complete transparency."*

The "Tunis" project is a collaboration between two young Tunisian and Egyptian couples who faced challenges in interior layout and lighting in their residence in Tunisia. We started by reimagining the layout, where the key solution lay in changing the orientation of the entrance door.

*Tunis, Tunis*

28



Enjoy this stunning open-air bathroom, where we took advantage of its top-floor location to open the ceiling to the sky, providing a unique experience. We incorporated an abundance of greenery while letting wood dominate, creating a natural atmosphere conducive to relaxation.

*"Take Your Bath in Privacy, yet Under the Open Sky."*

For the bedroom, we opted for a unique approach by transforming a decorative door into a headboard. This clever idea not only adds an artistic dimension to the room but also creates an exceptional atmosphere. The meticulously designed door becomes a captivating centerpiece, providing an intriguing visual perspective and adding personality to the bedroom.



29





# CATWOMAN

*When Cartoons Come to Life*

Upon entering this apartment, you immediately realize that you are not in an ordinary place. Your attention is captivated by the Picsou painting, beautifully showcased against the petrol green walls. This distinctive color creates a striking contrast with the black and white floor, accentuating the beauty of the painting in an exceptional way.



# DETAILS



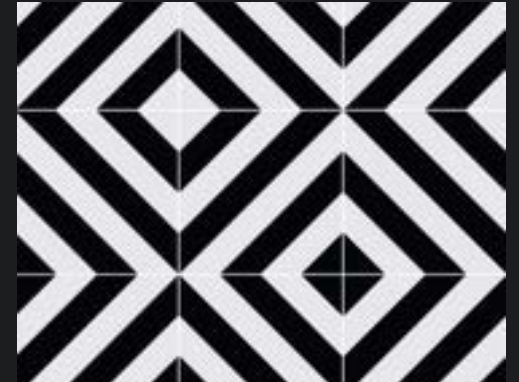
PICTURE

The "Catwoman" project was dedicated to a woman who has a strong character but is passionate about cartoons, and inside her lies a childlike and light-sensitive side.



DETAIL

The details of the old library found in her old apartment.



FLOORING  
TILES

"A black and white floor placed at the entrance enlivens the space."





# REGENT' PARK

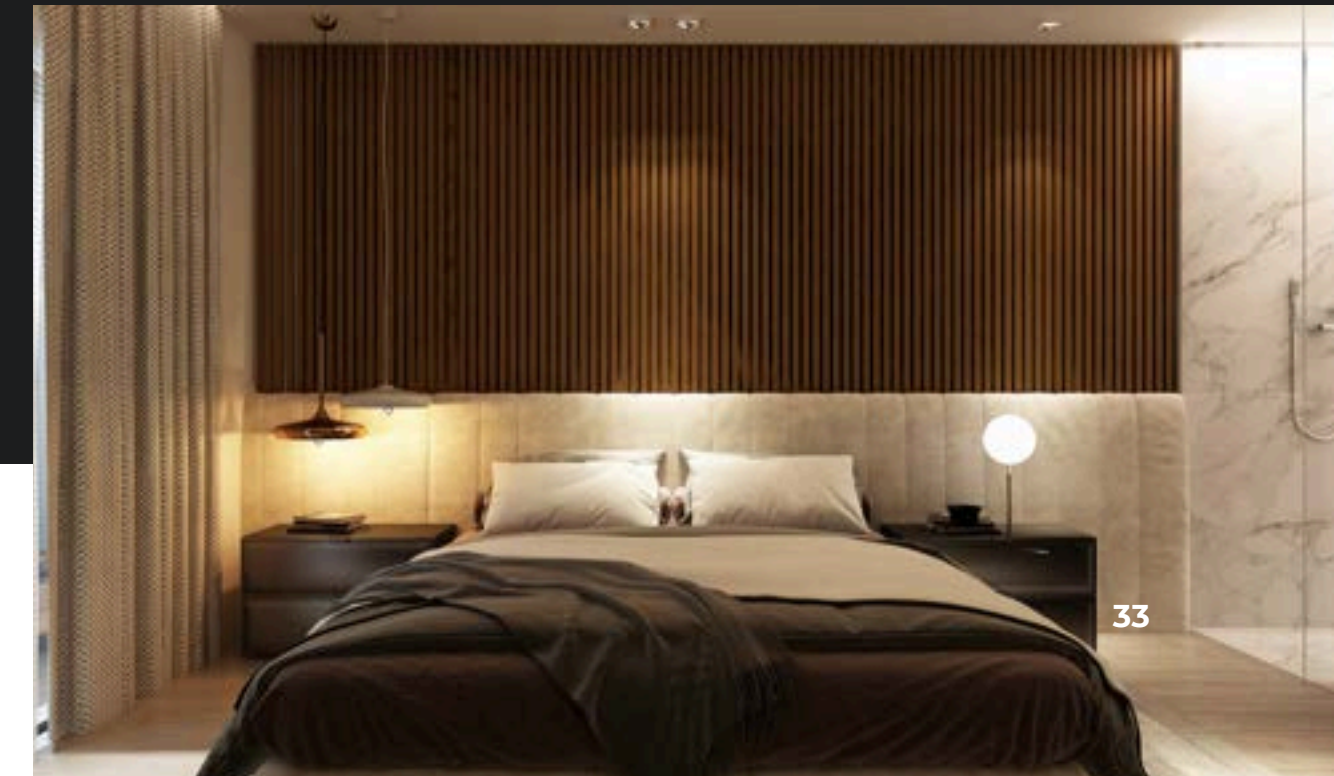
The image of this living room is both impressive and intriguing. At the center of the room stands a majestic marble fireplace that appears to defy gravity, with its marble mass seemingly suspended above the flames. The fireplace is a true design masterpiece, where the elegance of marble blends with exceptional engineering.

Cairo, Egypt



*"When Luxury Becomes an Integral Part of Everyday Life"*

We have created a passage through this elegant white marble double sink exposed in the dressing area to access the toilet and the panoramic shower, offering a completely unobstructed view of the bedroom from the shower.





# CHATEAU S

## *Harmonizing History and Glamour*

The castle on Salah Salem Street has been meticulously renovated by our team of interior architects. We preserved its original features while adding new elements, thus creating a harmony between the old and the modern. Additionally, we integrated a "bling-bling" aspect to align with the luxurious style of the owner. The castle now embodies a balanced fusion of historical elegance and glamour, reflecting the distinctive personality of its owner.

*Salah Salem street, Egypt*







# ALICANTE

*"The Artful Fusion of Past and Present."*

The owner's passion for materials and textures in general, but especially for Alicante marble, has been our main source of inspiration for this project. The use of a marble floor, blending Alicante marble with other varieties, imparts a unique dynamism to this entrance, establishing an elegant contrast with the wooden walls. This has given the entrance a distinctive character.

Cairo, Egypt



*The dining room.*

The dining room, accessible through a passage with gray wooden walls on either side, offers an experience that is both elegant and modern, creating a visually captivating setting from the entrance.







# HACIENDA

*"Integrating the Outdoors in Interior Design"*

One of the distinctive features of this project is the integration of a tree at the entrance, creating a harmonious connection between the outside and the inside. This unique design not only reflects the personality of the occupants but also transforms the space into a haven of serenity, where nature seamlessly blends with the architecture.



*"When Architectural Elements Bring Perspective to Life."*

In this exceptional living room, designed to embrace the natural light that floods the space, a warm and welcoming atmosphere is created, highlighting every detail of the decor. Furthermore, this living room features stunning ceiling beams that add a touch of character and warmth to the entire room. These architectural elements evoke the natural aspect, creating a comfortable and inviting ambiance.

**Cairo, Egypt**

---





# GOLD IN THE SEA

*"A Luxurious Seaside Oasis in Gouna"*

Outside, two majestic lions, crowned with gold, stand guard, gazing towards the horizon, while an infinity pool spills into the sea, creating a breathtaking view. "Gold in the Sea" represents a luxurious seaside residence in Gouna, owned by prosperous entrepreneurs. This majestic house has been meticulously designed to reflect opulence and grandeur, highlighting the golden hue, which is also the owners' preferred color.

*Gouna, Egypt*



# FURNITURE DESIGN



P O R T F O L I O



# BES

*Oh Bes! protect me from evil spirits."*

The "Bes" bed, named in homage to the ancient Egyptian god often depicted at the heads or feet of beds, Bès, the protector of men against nightmares and intimate troubles, served as a source of inspiration. Our goal was to reinterpret the concept of the bed from ancient Egypt by infusing it with a modern touch, so that it seamlessly integrates into contemporary life.



"Bes" is presented as a perforated decorative design featuring protective deities, designed to offer not only restful sleep but also a sense of well-being and a connection with ancient heritage.



By using the ancestral technique of caning dating back to ancient Egypt, it evokes a deep connection with history and tradition while offering a contemporary design and modern comfort.

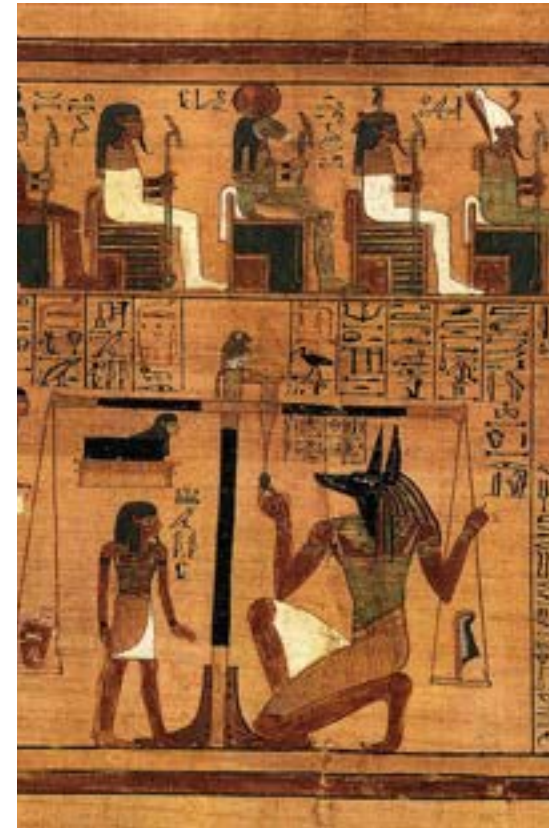


This integrated nightstand offers an elegant storage solution for your personal items while perfectly aligning with the bed's aesthetics.

# INPOU

*"Keep your heart more lighter  
than maat's feather."*

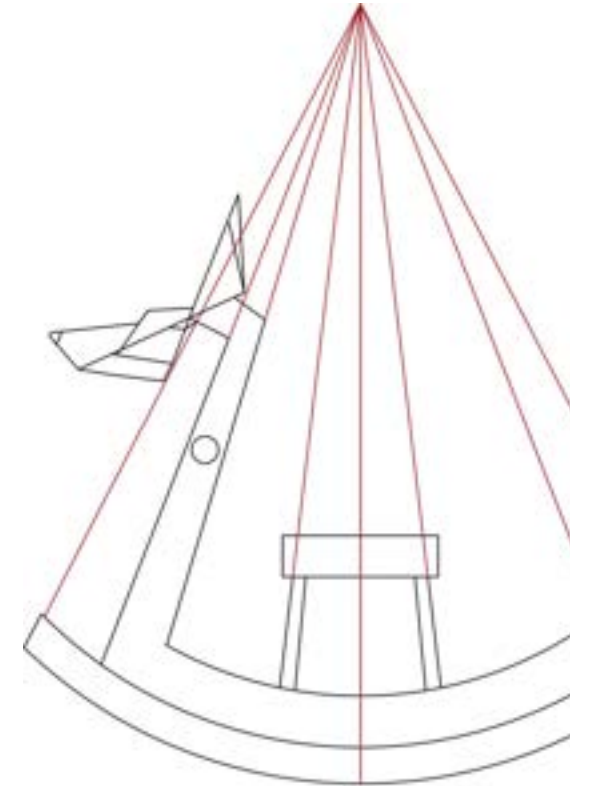
"I dedicate this piece of furniture to my dog Anubis (Inpou) he passed away before his first anniversary. His absence inspired me to create a piece of furniture inspired by the weighing of the heart scene in the ancient Egypt."



The weighing of the  
heart scene



Leather



All the perspective lines  
of the game converge to  
an imaginary point that  
together forms a balance.



# OFFICE

*"I am also a craftsman who excels in his art, to the best of his knowledge."*

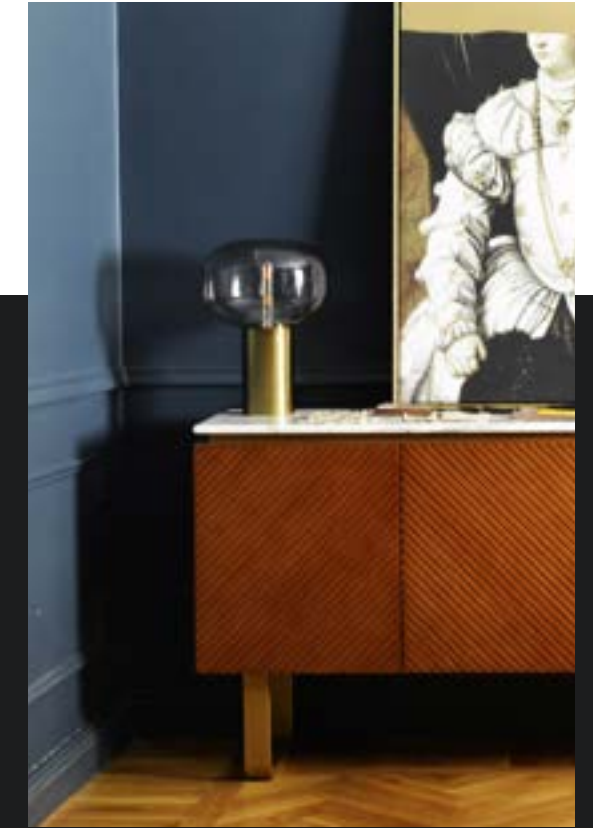
The first piece, which is the architect's desk, has been perforated at its base with depictions of ancient Egyptian laborers to pay tribute to the workers who have worked tirelessly since ancient Egypt to bring architects' dreams to life.



For this library, we extruded two pieces of wood, creating an impression of imbalance while keeping the same perforated base as the desk, which gives it a sense of lightness.



The design of the tea cabinet has been conceived to seamlessly integrate into the office environment while remaining functional.



Details of workers perforated in wood, allowing light to filter through from the other side.

# COMMERCIAL



P O R T F O L I O





# HANWA

*"The Artful Fusion of Past and Present."*

In this 150-square-meter office project, we aimed to create an inspiring and functional workspace, integrating natural elements to enhance the well-being of the occupants. One of the distinctive features of this office is the judicious use of wood, both as a structural material and as a central design element.

*Whaterway 5A , Egypt*

---







*Meeting room: Wooden Havens for Inspiration"*

Each meeting room is designed as a wooden box, offering a warm and intimate atmosphere. The natural wood walls create a welcoming and comfortable ambiance, while the large windows allow natural light to flood in, providing soothing views of the outdoor landscape.



# HOSPITALITY



P O R T F O L I O





# HOTEL M.

*"Subtle Elegance: Designing the Facade"*

The building facade has been meticulously designed to convey a sense of understated sobriety. Clean lines and minimalist elements contribute to a facade that speaks volumes in its simplicity. The dark color of the building, thoughtfully integrated, enhances this impression of sobriety while adding a touch of contemporary elegance.

*Cairo Maadi, Egypt*

---







### *"The Artistry of Arrival: Crafting Welcoming Spaces"*

The stairs, elegantly winding around the tree, serve as more than just a functional element. They embody a metaphorical journey, guiding guests towards the warmth and hospitality of the hotel's welcome.

For the rooms, we have taken care to create wooden headboards, adding a touch of warmth and elegance to the space.



